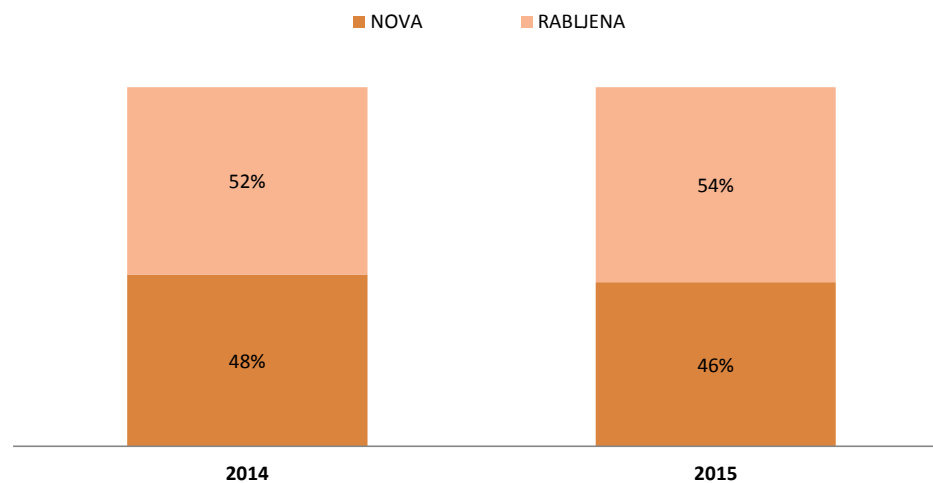


POSEBNI POREZ NA MOTORNA VOZILA 2015

1. Broj motornih vozila i obračunati posebni porez na motorna vozila
2. Broj motornih vozila i obračunati posebni porez na motorna vozila po mjesecima
3. Broj osobnih i pick-up vozila i obračunati posebni porez prema vrsti goriva
4. Broj osobnih i pick-up vozila prema vrsti goriva i emisiji CO₂
5. Broj motocikala i ATV vozila prema razini emisije ispušnih plinova
6. Broj motornih vozila prema marki vozila
7. Broj motornih vozila prema godini proizvodnje
8. Broj motornih vozila po carinskim uredima
9. Ostvareni prihodi od posebnog poreza na motorna vozila
10. Povrat posebnog poreza na motorna vozila

BROJ MOTORNIH VOZILA I OBRAČUNATI POSEBNI POREZ NA MOTORNA VOZILA

Predmet oporezivanja	BROJ VOZILA			OBRAČUNATI PPMV (kn)		
	2014	2015	2015 / 2014. (%)	2014	2015	2015 / 2014. (%)
Osobna i pick-up vozila	34.183	36.179	5,84%	480.780.406	503.224.100	4,67%
Motocikli, ATV vozila...	1.518	1.706	12,38%	7.781.008	8.548.732	9,87%
NOVA VOZILA	35.701	37.885	6,12%	488.561.414	511.772.832	4,75%
Osobna i pick-up vozila	38.226	44.096	15,36%	295.751.572	324.728.312	9,80%
Motocikli, ATV vozila...	765	1.001	30,85%	2.912.410	3.572.049	22,65%
RABLJENA VOZILA	38.991	45.097	15,66%	298.663.982	328.300.360	9,92%
Osobna i pick-up vozila	72.409	80.275	10,86%	776.531.978	827.952.412	6,62%
Motocikli, ATV vozila...	2.283	2.707	18,57%	10.693.418	12.120.781	13,35%
UKUPNO	74.692	82.982	11,10%	787.225.396	840.073.192	6,71%



Izvor podataka: IS CURH (na dan 22.2.2016.)

BROJ MOTORNIH VOZILA I OBRAČUNATI POSEBNI POREZ NA MOTORNA VOZILA

VRSTA VOZILA	OSOBNA I PICK-UP VOZILA	MOTOCIKLI, ATV VOZILA	UKUPNO	OSOBNA I PICK-UP VOZILA	MOTOCIKLI, ATV VOZILA	UKUPNO	OSOBNA I PICK-UP VOZILA	MOTOCIKLI, ATV VOZILA	UKUPNO
	STAROST VOZILA			NOVA VOZILA			2015. / 2014. (%)		
GODINA / MJESEC	2014			2015					
SIJEČANJ	2.022	46	2.068	2.323	80	2.403	14,89%	73,91%	16,20%
VELJAČA	2.351	65	2.416	2.464	69	2.533	4,81%	6,15%	4,84%
OŽUJAK	3.415	135	3.550	3.601	109	3.710	5,45%	-19,26%	4,51%
TRAVANJ	4.547	217	4.764	3.518	206	3.724	-22,63%	-5,07%	-21,83%
SVIBANJ	4.884	207	5.091	5.156	238	5.394	5,57%	14,98%	5,95%
LIPANJ	4.193	174	4.367	4.838	222	5.060	15,38%	27,59%	15,87%
SRPANJ	2.883	208	3.091	3.053	248	3.301	5,90%	19,23%	6,79%
KOLOVOZ	1.597	126	1.723	1.743	116	1.859	9,14%	-7,94%	7,89%
RUJAN	2.029	104	2.133	2.246	185	2.431	10,69%	77,88%	13,97%
LISTOPAD	2.451	122	2.573	2.355	77	2.432	-3,92%	-36,89%	-5,48%
STUDENI	1.877	56	1.933	2.555	81	2.636	36,12%	44,64%	36,37%
PROSINAC	1.934	58	1.992	2.327	75	2.402	20,32%	29,31%	20,58%
BROJ VOZILA	34.183	1.518	35.701	36.179	1.706	37.885	5,84%	12,38%	6,12%

SIJEČANJ	29.829.684	263.386	30.093.070	31.684.414	272.246	31.956.660	6,22%	3,36%	6,19%
VELJAČA	36.172.359	312.082	36.484.441	31.518.147	363.189	31.881.336	-12,87%	16,38%	-12,62%
OŽUJAK	55.415.685	706.570	56.122.255	43.603.406	739.161	44.342.567	-21,32%	4,61%	-20,99%
TRAVANJ	53.715.170	1.212.879	54.928.049	49.282.169	1.183.118	50.465.287	-8,25%	-2,45%	-8,12%
SVIBANJ	56.630.006	1.072.289	57.702.295	63.034.236	1.269.027	64.303.263	11,31%	18,35%	11,44%
LIPANJ	53.266.732	945.357	54.212.089	60.891.290	1.028.328	61.919.619	14,31%	8,78%	14,22%
SRPANJ	45.389.848	1.040.203	46.430.051	44.736.560	1.139.672	45.876.232	-1,44%	9,56%	-1,19%
KOLOVOZ	23.347.599	607.948	23.955.546	27.976.118	523.930	28.500.048	19,82%	-13,82%	18,97%
RUJAN	30.547.812	476.347	31.024.159	37.939.437	793.298	38.732.735	24,20%	66,54%	24,85%
LISTOPAD	38.028.015	579.017	38.607.032	37.428.927	390.491	37.819.418	-1,58%	-32,56%	-2,04%
STUDENI	29.453.015	254.901	29.707.917	37.534.318	484.172	38.018.489	27,44%	89,94%	27,97%
PROSINAC	28.984.481	310.030	29.294.511	37.595.076	362.102	37.957.178	29,71%	16,80%	29,57%
OBRAČUNATI PPMV - kn	480.780.406	7.781.008	488.561.414	503.224.100	8.548.732	511.772.832	4,67%	9,87%	4,75%

VRSTA VOZILA	OSOBNA I PICK-UP VOZILA	MOTOCIKLI, ATV VOZILA	UKUPNO	OSOBNA I PICK-UP VOZILA	MOTOCIKLI, ATV VOZILA	UKUPNO	OSOBNA I PICK-UP VOZILA	MOTOCIKLI, ATV VOZILA	UKUPNO
	STAROST VOZILA			RABLJENA VOZILA			2015. / 2014. (%)		
GODINA / MJESEC	2014			2015					
SIJEČANJ	2.731	33	2.764	2.908	49	2.957	6,48%	48,48%	6,98%
VELJAČA	2.833	42	2.875	2.931	36	2.967	3,46%	-14,29%	3,20%
OŽUJAK	3.140	66	3.206	3.826	84	3.910	21,85%	27,27%	21,96%
TRAVANJ	3.398	82	3.480	3.619	108	3.727	6,50%	31,71%	7,10%
SVIBANJ	2.968	94	3.062	3.447	105	3.552	16,14%	11,70%	16,00%
LIPANJ	2.920	94	3.014	3.720	114	3.834	27,40%	21,28%	27,21%
SRPANJ	3.626	99	3.725	4.199	152	4.351	15,80%	53,54%	16,81%
KOLOVOZ	2.843	59	2.902	3.131	104	3.235	10,13%	76,27%	11,47%
RUJAN	3.550	69	3.619	3.856	67	3.923	8,62%	-2,90%	8,40%
LISTOPAD	3.800	58	3.858	4.313	66	4.379	13,50%	13,79%	13,50%
STUDENI	3.193	35	3.228	4.070	62	4.132	27,47%	77,14%	28,00%
PROSINAC	3.224	34	3.258	4.076	54	4.130	26,43%	58,82%	26,76%
BROJ VOZILA	38.226	765	38.991	44.096	1.001	45.097	15,36%	30,85%	15,66%

SIJEČANJ	21.361.206	155.703	21.516.909	21.172.304	177.100	21.349.404	-0,88%	13,74%	-0,78%
VELJAČA	21.569.054	168.406	21.737.460	21.191.020	120.758	21.311.778	-1,75%	-28,29%	-1,96%
OŽUJAK	23.702.001	246.161	23.948.162	27.432.998	316.927	27.749.925	15,74%	28,75%	15,87%
TRAVANJ	26.124.723	325.652	26.450.376	26.246.174	440.644	26.686.819	0,46%	35,31%	0,89%
SVIBANJ	24.848.638	371.035	25.219.673	24.982.758	411.347	25.394.105	0,54%	10,86%	0,69%
LIPANJ	23.072.658	356.257	23.428.915	25.270.664	376.303	25.646.967	9,53%	5,63%	9,47%
SRPANJ	29.053.750	358.318	29.412.068	32.666.225	507.797	33.174.022	12,43%	41,72%	12,79%
KOLOVOZ	20.539.813	204.606	20.744.419	22.780.461	292.483	23.072.944	10,91%	42,95%	11,22%
RUJAN	26.363.244	251.267	26.614.510	28.883.836	236.860	29.120.696	9,56%	-5,73%	9,42%
LISTOPAD	29.419.792	201.773	29.621.565	31.984.148	261.101	32.245.249	8,72%	29,40%	8,86%
STUDENI	25.334.033	117.725	25.451.759	31.132.814	225.970	31.358.784	22,89%	91,95%	23,21%
PROSINAC	24.362.659	155.507	24.518.166	30.984.910	204.760	31.189.669	27,18%	31,67%	27,21%
OBRAČUNATI PPMV - kn	295.751.572	2.912.410	298.663.982	324.728.312	3.572.049	328.300.360	9,80%	22,65%	9,92%

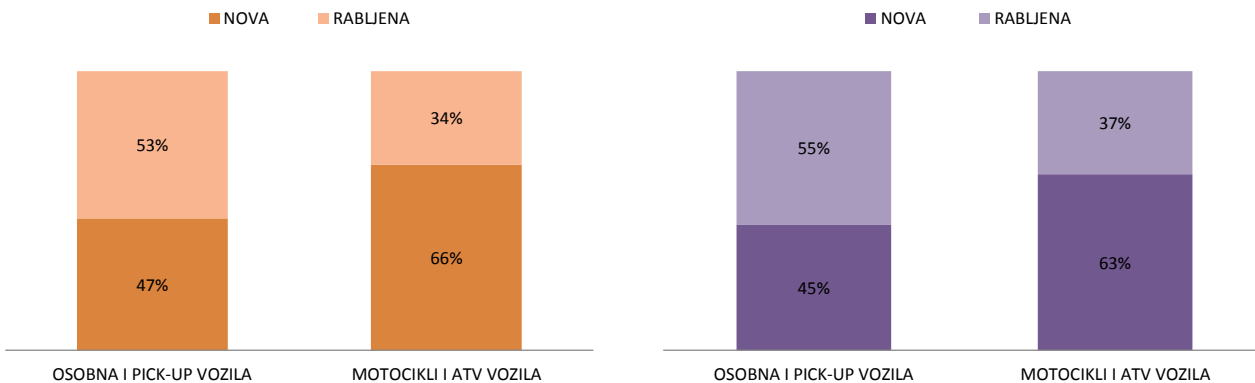
BROJ MOTORNIH VOZILA I OBRAČUNATI POSEBNI POREZ NA MOTORNA VOZILA

VRSTA VOZILA	OSOBNA I PICK-UP VOZILA	MOTOCIKLI, ATV VOZILA	UKUPNO	OSOBNA I PICK-UP VOZILA	MOTOCIKLI, ATV VOZILA	UKUPNO	OSOBNA I PICK-UP VOZILA	MOTOCIKLI, ATV VOZILA	UKUPNO
	2014			2015			2015. / 2014. (%)		
STAROST VOZILA	VOZILA - UKUPNO								
GODINA / MJESEC	2014			2015			2015. / 2014. (%)		
SIJEČANJ	4.753	79	4.832	5.231	129	5.360	10,06%	63,29%	10,93%
VELJAČA	5.184	107	5.291	5.395	105	5.500	4,07%	-1,87%	3,95%
OŽUJAK	6.555	201	6.756	7.427	193	7.620	13,30%	-3,98%	12,79%
TRAVANJ	7.945	299	8.244	7.137	314	7.451	-10,17%	5,02%	-9,62%
SVIBANJ	7.852	301	8.153	8.603	343	8.946	9,56%	13,95%	9,73%
LIPANJ	7.113	268	7.381	8.558	336	8.894	20,31%	25,37%	20,50%
SRPANJ	6.509	307	6.816	7.252	400	7.652	11,41%	30,29%	12,27%
KOLOVOZ	4.440	185	4.625	4.874	220	5.094	9,77%	18,92%	10,14%
RUJAN	5.579	173	5.752	6.102	252	6.354	9,37%	45,66%	10,47%
LISTOPAD	6.251	180	6.431	6.668	143	6.811	6,67%	-20,56%	5,91%
STUDENI	5.070	91	5.161	6.625	143	6.768	30,67%	57,14%	31,14%
PROSINAC	5.158	92	5.250	6.403	129	6.532	24,14%	40,22%	24,42%
BROJ VOZILA	72.409	2.283	74.692	80.275	2.707	82.982	10,86%	18,57%	11,10%
SIJEČANJ	51.190.890	419.089	51.609.978	52.856.718	449.346	53.306.064	3,25%	7,22%	3,29%
VELJAČA	57.741.413	480.488	58.221.900	52.709.167	483.947	53.193.114	-8,72%	0,72%	-8,64%
OŽUJAK	79.117.686	952.731	80.070.417	71.036.404	1.056.088	72.092.491	-10,21%	10,85%	-9,96%
TRAVANJ	79.839.893	1.538.532	81.378.425	75.528.344	1.623.762	77.152.106	-5,40%	5,54%	-5,19%
SVIBANJ	81.478.644	1.443.324	82.921.968	88.016.994	1.680.373	89.697.367	8,02%	16,42%	8,17%
LIPANJ	76.339.390	1.301.614	77.641.004	86.161.954	1.404.631	87.566.586	12,87%	7,91%	12,78%
SRPANJ	74.443.598	1.398.521	75.842.118	77.402.785	1.647.469	79.050.254	3,98%	17,80%	4,23%
KOLOVOZ	43.887.412	812.554	44.699.966	50.756.580	816.413	51.572.992	15,65%	0,47%	15,38%
RUJAN	56.911.056	727.613	57.638.669	66.823.273	1.030.157	67.853.431	17,42%	41,58%	17,72%
LISTOPAD	67.447.808	780.790	68.228.597	69.413.075	651.591	70.064.667	2,91%	-16,55%	2,69%
STUDENI	54.787.049	372.627	55.159.676	68.667.132	710.141	69.377.273	25,33%	90,58%	25,78%
PROSINAC	53.347.140	465.537	53.812.677	68.579.986	566.862	69.146.848	28,55%	21,77%	28,50%
OBRAČUNATI PPMV - kn	776.531.978	10.693.418	787.225.396	827.952.412	12.120.781	840.073.192	6,62%	13,35%	6,71%

Izvor podataka: IS CURH (na dan 22.2.2016.)

2014

2015



BROJ OSOBNIH I PICK-UP VOZILA I OBRAČUNATI POSEBNI POREZ PREMA VRSTI GORIVA

VRSTA GORIVA	DIESEL	BENZIN,...	UKUPNO	DIESEL	BENZIN, ...	UKUPNO	DIESEL	BENZIN, ...	UKUPNO
STAROST VOZILA	NOVA VOZILA								
GODINA / MJESEC	2014			2015			2015. / 2014. (%)		
SIJEČANJ	1.299	723	2.022	1.582	741	2.323	21,79%	2,49%	14,89%
VELJAČA	1.639	712	2.351	1.823	641	2.464	11,23%	-9,97%	4,81%
OŽUJAK	2.210	1.205	3.415	2.167	1.434	3.601	-1,95%	19,00%	5,45%
TRAVANJ	2.938	1.609	4.547	2.345	1.173	3.518	-20,18%	-27,10%	-22,63%
SVIBANJ	2.835	2.049	4.884	3.075	2.081	5.156	8,47%	1,56%	5,57%
LIPANJ	2.552	1.641	4.193	3.114	1.724	4.838	22,02%	5,06%	15,38%
SRPANJ	1.857	1.026	2.883	2.041	1.012	3.053	9,91%	-1,36%	5,90%
KOLOVOZ	1.041	556	1.597	1.173	570	1.743	12,68%	2,52%	9,14%
RUJAN	1.270	759	2.029	1.487	759	2.246	17,09%	0,00%	10,69%
LISTOPAD	1.590	861	2.451	1.470	885	2.355	-7,55%	2,79%	-3,92%
STUDENI	1.232	645	1.877	1.496	1.059	2.555	21,43%	64,19%	36,12%
PROSINAC	1.147	787	1.934	1.488	839	2.327	29,73%	6,61%	20,32%
BROJ VOZILA	21.610	12.573	34.183	23.261	12.918	36.179	7,64%	2,74%	5,84%
SIJEČANJ	23.700.789	6.128.895	29.829.684	25.615.558	6.068.856	31.684.414	8,08%	-0,98%	6,22%
VELJAČA	28.684.398	7.487.960	36.172.359	26.033.438	5.484.709	31.518.147	-9,24%	-26,75%	-12,87%
OŽUJAK	43.794.902	11.620.783	55.415.685	33.883.103	9.720.303	43.603.406	-22,63%	-16,35%	-21,32%
TRAVANJ	39.640.690	14.074.480	53.715.170	39.765.632	9.516.537	49.282.169	0,32%	-32,38%	-8,25%
SVIBANJ	42.671.121	13.958.885	56.630.006	49.960.972	13.073.264	63.034.236	17,08%	-6,34%	11,31%
LIPANJ	42.076.038	11.190.694	53.266.732	48.285.043	12.606.247	60.891.290	14,76%	12,65%	14,31%
SRPANJ	37.072.034	8.317.814	45.389.848	36.909.130	7.827.430	44.736.560	-0,44%	-5,90%	-1,44%
KOLOVOZ	19.084.196	4.263.402	23.347.599	23.115.345	4.860.773	27.976.118	21,12%	14,01%	19,82%
RUJAN	23.620.564	6.927.248	30.547.812	30.352.913	7.586.525	37.939.437	28,50%	9,52%	24,20%
LISTOPAD	29.783.978	8.244.038	38.028.015	29.442.725	7.986.203	37.428.927	-1,15%	-3,13%	-1,58%
STUDENI	24.536.922	4.916.094	29.453.015	29.069.923	8.464.395	37.534.318	18,47%	72,18%	27,44%
PROSINAC	23.471.426	5.513.055	28.984.481	29.846.194	7.748.882	37.595.076	27,16%	40,56%	29,71%
OBRAČUNATI PPMV - kn	378.137.059	102.643.348	480.780.406	402.279.976	100.944.124	503.224.100	6,38%	-1,66%	4,67%

VRSTA GORIVA	DIESEL	BENZIN,...	UKUPNO	DIESEL	BENZIN, ...	UKUPNO	DIESEL	BENZIN, ...	UKUPNO
STAROST VOZILA	RABLJENA VOZILA								
GODINA / MJESEC	2014			2015			2015. / 2014. (%)		
SIJEČANJ	2.239	492	2.731	2.469	439	2.908	10,27%	-10,77%	6,48%
VELJAČA	2.358	475	2.833	2.526	405	2.931	7,12%	-14,74%	3,46%
OŽUJAK	2.602	538	3.140	3.232	594	3.826	24,21%	10,41%	21,85%
TRAVANJ	2.771	627	3.398	3.031	588	3.619	9,38%	-6,22%	6,50%
SVIBANJ	2.434	534	2.968	2.876	571	3.447	18,16%	6,93%	16,14%
LIPANJ	2.432	488	2.920	3.177	543	3.720	30,63%	11,27%	27,40%
SRPANJ	2.936	690	3.626	3.470	729	4.199	18,19%	5,65%	15,80%
KOLOVOZ	2.320	523	2.843	2.604	527	3.131	12,24%	0,76%	10,13%
RUJAN	2.970	580	3.550	3.273	583	3.856	10,20%	0,52%	8,62%
LISTOPAD	3.250	550	3.800	3.670	643	4.313	12,92%	16,91%	13,50%
STUDENI	2.732	461	3.193	3.466	604	4.070	26,87%	31,02%	27,47%
PROSINAC	2.728	496	3.224	3.452	624	4.076	26,54%	25,81%	26,43%
BROJ VOZILA	31.772	6.454	38.226	37.246	6.850	44.096	17,23%	6,14%	15,36%
SIJEČANJ	18.212.139	3.149.067	21.361.206	18.847.486	2.324.818	21.172.304	3,49%	-26,17%	-0,88%
VELJAČA	18.841.284	2.727.770	21.569.054	19.550.454	1.640.566	21.191.020	3,76%	-39,86%	-1,75%
OŽUJAK	20.866.538	2.835.462	23.702.001	24.279.573	3.153.425	27.432.998	16,36%	11,21%	15,74%
TRAVANJ	22.762.377	3.362.346	26.124.723	22.329.171	3.917.004	26.246.174	-1,90%	16,50%	0,46%
SVIBANJ	21.001.791	3.846.847	24.848.638	21.407.293	3.575.465	24.982.758	1,93%	-7,05%	0,54%
LIPANJ	19.912.290	3.160.368	23.072.658	22.904.356	2.366.308	25.270.664	15,03%	-25,13%	9,53%
SRPANJ	24.444.262	4.609.488	29.053.750	27.802.858	4.863.366	32.666.225	13,74%	5,51%	12,43%
KOLOVOZ	17.409.088	3.130.726	20.539.813	19.708.710	3.071.752	22.780.461	13,21%	-1,88%	10,91%
RUJAN	23.276.054	3.087.190	26.363.244	25.524.303	3.359.533	28.883.836	9,66%	8,82%	9,56%
LISTOPAD	26.223.597	3.196.195	29.419.792	28.128.826	3.855.322	31.984.148	7,27%	20,62%	8,72%
STUDENI	22.803.957	2.530.077	25.334.033	28.046.742	3.086.072	31.132.814	22,99%	21,98%	22,89%
PROSINAC	21.323.893	3.038.766	24.362.659	27.302.477	3.682.432	30.984.910	28,04%	21,18%	27,18%
OBRAČUNATI PPMV - kn	257.077.270	38.674.302	295.751.572	285.832.248	38.896.064	324.728.312	11,19%	0,57%	9,80%

BROJ OSOBNIH I PICK-UP VOZILA I OBRAČUNATI POSEBNI POREZ PREMA VRSTI GORIVA

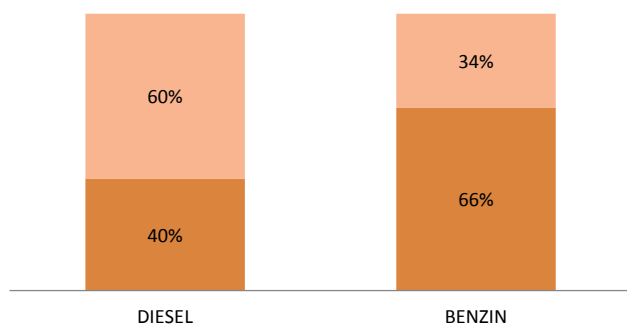
VRSTA GORIVA	DIESEL	BENZIN,...	UKUPNO	DIESEL	BENZIN, ...	UKUPNO	DIESEL	BENZIN, ...	UKUPNO
STAROST VOZILA	VOZILA - ukupno								
GODINA / MJESEC	2014			2015			2015. / 2014. (%)		
SIJEČANJ	3.538	1.215	4.753	4.051	1.180	5.231	14,50%	-2,88%	10,06%
VELJAČA	3.997	1.187	5.184	4.349	1.046	5.395	8,81%	-11,88%	4,07%
OŽUJAK	4.812	1.743	6.555	5.399	2.028	7.427	12,20%	16,35%	13,30%
TRAVANJ	5.709	2.236	7.945	5.376	1.761	7.137	-5,83%	-21,24%	-10,17%
SVIBANJ	5.269	2.583	7.852	5.951	2.652	8.603	12,94%	2,67%	9,56%
LIPANJ	4.984	2.129	7.113	6.291	2.267	8.558	26,22%	6,48%	20,31%
SRPANJ	4.793	1.716	6.509	5.511	1.741	7.252	14,98%	1,46%	11,41%
KOLOVOZ	3.361	1.079	4.440	3.777	1.097	4.874	12,38%	1,67%	9,77%
RUJAN	4.240	1.339	5.579	4.760	1.342	6.102	12,26%	0,22%	9,37%
LISTOPAD	4.840	1.411	6.251	5.140	1.528	6.668	6,20%	8,29%	6,67%
STUDENI	3.964	1.106	5.070	4.962	1.663	6.625	25,18%	50,36%	30,67%
PROSINAC	3.875	1.283	5.158	4.940	1.463	6.403	27,48%	14,03%	24,14%
BROJ VOZILA	53.382	19.027	72.409	60.507	19.768	80.275	13,35%	3,89%	10,86%

SIJEČANJ	41.912.928	9.277.961	51.190.890	44.463.043	8.393.674	52.856.718	6,08%	-9,53%	3,25%
VELJAČA	47.525.682	10.215.730	57.741.413	45.583.891	7.125.276	52.709.167	-4,09%	-30,25%	-8,72%
OŽUJAK	64.661.440	14.456.246	79.117.686	58.162.676	12.873.728	71.036.404	-10,05%	-10,95%	-10,21%
TRAVANJ	62.403.067	17.436.826	79.839.893	62.094.803	13.433.541	75.528.344	-0,49%	-22,96%	-5,40%
SVIBANJ	63.672.913	17.805.731	81.478.644	71.368.265	16.648.729	88.016.994	12,09%	-6,50%	8,02%
LIPANJ	61.988.329	14.351.062	76.339.390	71.189.399	14.972.555	86.161.954	14,84%	4,33%	12,87%
SRPANJ	61.516.295	12.927.303	74.443.598	64.711.988	12.690.796	77.402.785	5,19%	-1,83%	3,98%
KOLOVOZ	36.493.284	7.394.128	43.887.412	42.824.055	7.932.525	50.756.580	17,35%	7,28%	15,65%
RUJAN	46.896.618	10.014.438	56.911.056	55.877.216	10.946.058	66.823.273	19,15%	9,30%	17,42%
LISTOPAD	56.007.575	11.440.233	67.447.808	57.571.550	11.841.525	69.413.075	2,79%	3,51%	2,91%
STUDENI	47.340.879	7.446.170	54.787.049	57.116.665	11.550.467	68.667.132	20,65%	55,12%	25,33%
PROSINAC	44.795.319	8.551.821	53.347.140	57.148.672	11.431.314	68.579.986	27,58%	33,67%	28,55%
OBRAČUNATI PPMV - kn	635.214.329	141.317.650	776.531.978	688.112.224	139.840.188	827.952.412	8,33%	-1,05%	6,62%

Izvor podataka: IS CURH (na dan 22.2.2016.)

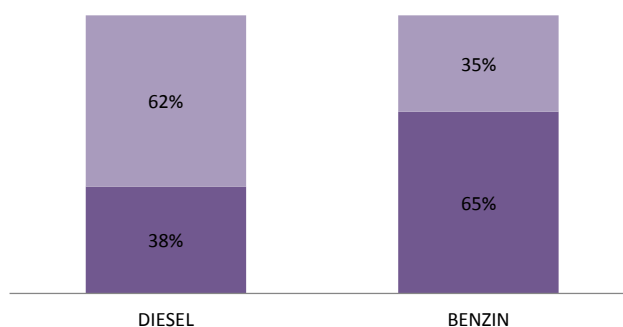
2014

■ NOVA ■ RABLJENA



2015

■ NOVA ■ RABLJENA

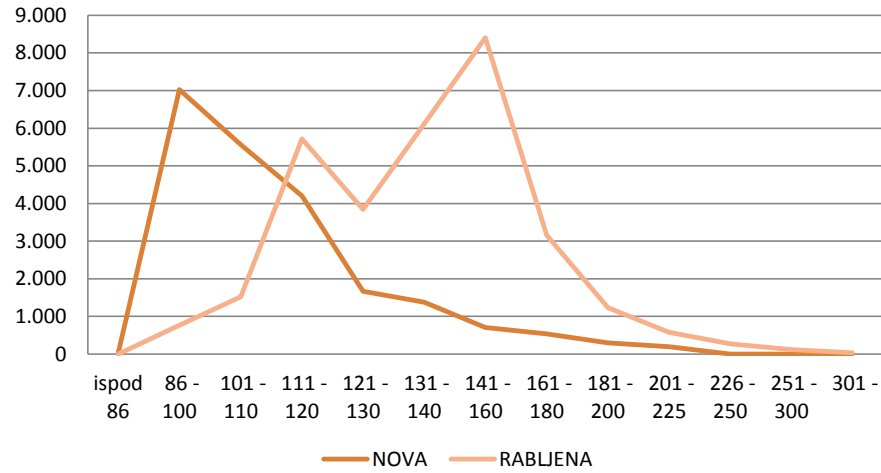


BROJ OSOBNIH I PICK-UP VOZILA PREMA VRSTI GORIVA I EMISIJI CO2

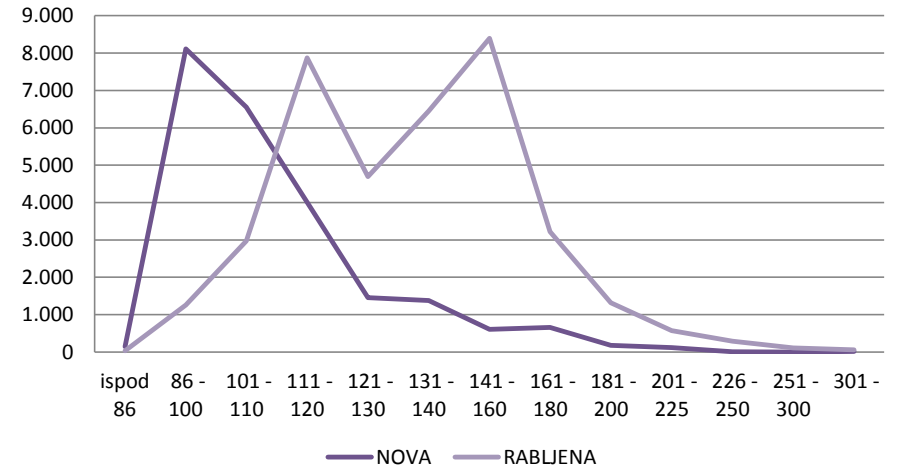
EMISIJA CO2	NOVA VOZILA				RABLJENA VOZILA				VOZILA - UKUPNO			
	BROJ VOZILA	Broj vozila - udio (%)	BROJ VOZILA	Broj vozila - udio (%)	BROJ VOZILA	Broj vozila - udio (%)	BROJ VOZILA	Broj vozila - udio (%)	BROJ VOZILA	Broj vozila - udio (%)	BROJ VOZILA	Broj vozila - udio (%)
	2014		2015		2014		2015		2014		2015	
ispod 86	32	0,09%	144	0,40%	4	0,01%	32	0,07%	36	0,05%	176	0,22%
86 - 100	7.026	20,55%	8.113	22,42%	764	2,00%	1.259	2,86%	7.790	10,76%	9.372	11,67%
101 - 110	5.560	16,27%	6.555	18,12%	1.524	3,99%	2.975	6,75%	7.084	9,78%	9.530	11,87%
111 - 120	4.198	12,28%	4.012	11,09%	5.716	14,95%	7.874	17,86%	9.914	13,69%	11.886	14,81%
121 - 130	1.664	4,87%	1.458	4,03%	3.844	10,06%	4.695	10,65%	5.508	7,61%	6.153	7,66%
131 - 140	1.378	4,03%	1.381	3,82%	6.118	16,00%	6.453	14,63%	7.496	10,35%	7.834	9,76%
141 - 160	709	2,07%	611	1,69%	8.400	21,97%	8.395	19,04%	9.109	12,58%	9.006	11,22%
161 - 180	537	1,57%	662	1,83%	3.155	8,25%	3.217	7,30%	3.692	5,10%	3.879	4,83%
181 - 200	297	0,87%	178	0,49%	1.237	3,24%	1.320	2,99%	1.534	2,12%	1.498	1,87%
201 - 225	196	0,57%	122	0,34%	582	1,52%	575	1,30%	778	1,07%	697	0,87%
226 - 250	2	0,01%	8	0,02%	272	0,71%	287	0,65%	274	0,38%	295	0,37%
251 - 300	1	0,00%	3	0,01%	123	0,32%	107	0,24%	124	0,17%	110	0,14%
301 -	10	0,03%	14	0,04%	33	0,09%	57	0,13%	43	0,06%	71	0,09%
DIESEL	21.610	63,22%	23.261	64,29%	31.772	83,12%	37.246	84,47%	53.382	73,72%	60.507	75,37%
ispod 91	365	1,07%	413	1,14%	13	0,03%	25	0,06%	378	0,52%	438	0,55%
91 - 100	446	1,30%	638	1,76%	111	0,29%	172	0,39%	557	0,77%	810	1,01%
101 - 110	2.587	7,57%	3.399	9,39%	184	0,48%	303	0,69%	2.771	3,83%	3.702	4,61%
111 - 120	4.613	13,50%	3.879	10,72%	575	1,50%	645	1,46%	5.188	7,16%	4.524	5,64%
121 - 130	2.333	6,83%	2.951	8,16%	378	0,99%	483	1,10%	2.711	3,74%	3.434	4,28%
131 - 140	1.388	4,06%	702	1,94%	1.189	3,11%	1.183	2,68%	2.577	3,56%	1.885	2,35%
141 - 160	679	1,99%	781	2,16%	1.671	4,37%	1.662	3,77%	2.350	3,25%	2.443	3,04%
161 - 180	92	0,27%	110	0,30%	1.146	3,00%	1.160	2,63%	1.238	1,71%	1.270	1,58%
181 - 200	18	0,05%	15	0,04%	554	1,45%	623	1,41%	572	0,79%	638	0,79%
201 - 225	31	0,09%	16	0,04%	316	0,83%	306	0,69%	347	0,48%	322	0,40%
226 - 250	12	0,04%	11	0,03%	156	0,41%	146	0,33%	168	0,23%	157	0,20%
251 - 300	5	0,01%	0		110	0,29%	92	0,21%	115	0,16%	92	0,11%
301 -	4	0,01%	3	0,01%	51	0,13%	50	0,11%	55	0,08%	53	0,07%
BENZIN,UNP, DIESEL EURO VI	12.573	36,78%	12.918	35,71%	6.454	16,88%	6.850	15,53%	19.027	26,28%	19.768	24,63%
UKUPNO	34.183	100,00%	36.179	100,00%	38.226	100,00%	44.096	100,00%	72.409	100,00%	80.275	100,00%

Izvor podataka: IS CURH (na dan 22.2.2016.)

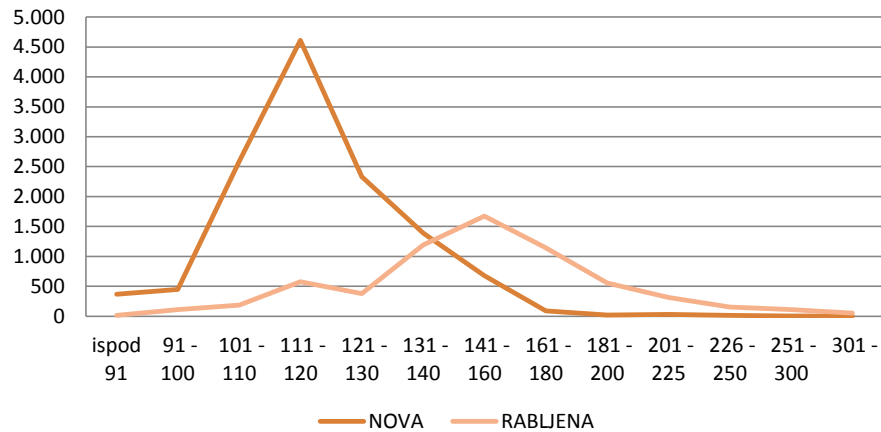
BROJ VOZILA 2014 - diesel



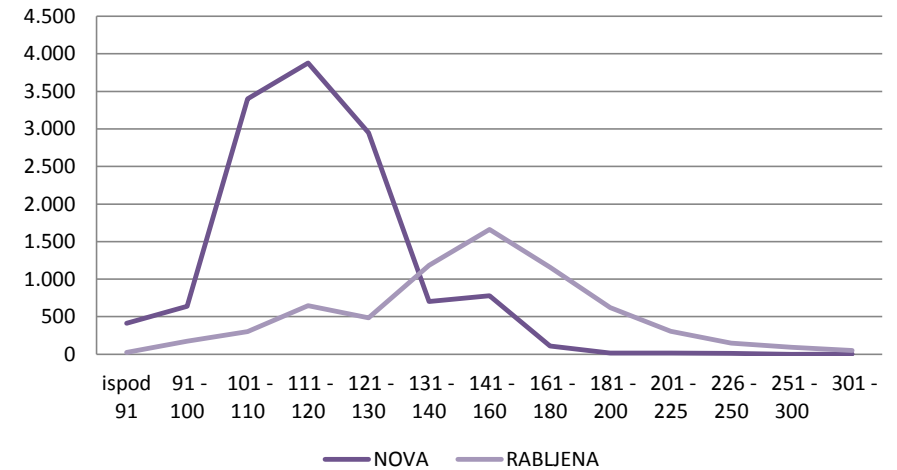
BROJ VOZILA 2015 - diesel



BROJ VOZILA 2014 - benzin, LPG, diesel EURO VI



BROJ VOZILA 2015 - benzin, LPG, diesel EURO VI

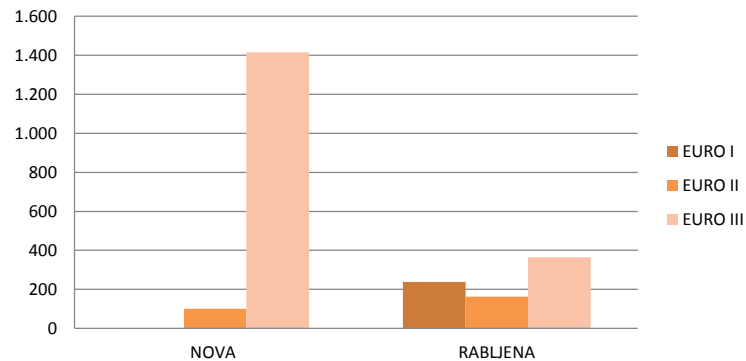


BROJ MOTOCIKALA I ATV VOZILA PREMA RAZINI EMISIJE ISPUŠNIH PLYNOVA

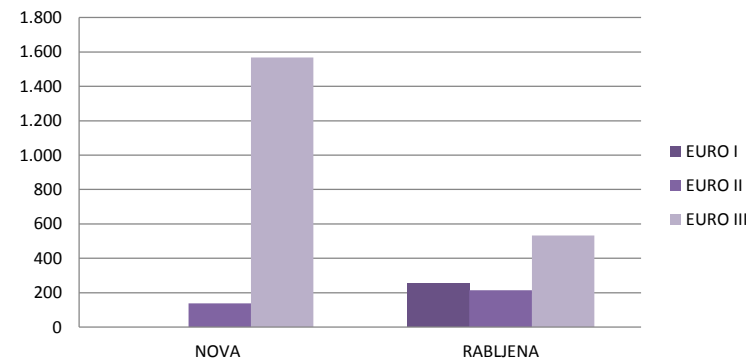
RAZINA EMISIJE ISPUŠNIH PLYNOVA	NOVA VOZILA		RABLIJENA VOZILA		VOZILA - UKUPNO							
	BROJ VOZILA	Broj vozila - udio (%)	BROJ VOZILA	Broj vozila - udio (%)	BROJ VOZILA	Broj vozila - udio (%)						
	2014		2015		2014		2015					
ispod 51				1	0,13%			1	0,04%	0		
51 - 125				52	6,80%			52	2,28%	28	1,03%	
126 - 250				34	4,44%			34	1,49%	26	0,96%	
251 - 400	2	0,13%		7	0,92%			9	0,39%	8	0,30%	
401 - 600				53	6,93%			53	2,32%	63	2,33%	
601 - 800				37	4,84%			37	1,62%	51	1,88%	
801 - 1000				21	2,75%			21	0,92%	33	1,22%	
1001 -				34	4,44%			34	1,49%	45	1,66%	
EURO I	2	0,13%	0	239	31,24%	254	25,37%	241	10,56%	254	9,38%	
ispod 51			1	0,06%	1	0,13%			1	0,04%	1	0,04%
51 - 125	1	0,07%	3	0,18%	37	4,84%	23	2,30%	38	1,66%	26	0,96%
126 - 250	70	4,61%	69	4,04%	19	2,48%	35	3,50%	89	3,90%	104	3,84%
251 - 400	13	0,86%	31	1,82%	9	1,18%	18	1,80%	22	0,96%	49	1,81%
401 - 600	10	0,66%	25	1,47%	22	2,88%	50	5,00%	32	1,40%	75	2,77%
601 - 800	4	0,26%	4	0,23%	35	4,58%	31	3,10%	39	1,71%	35	1,29%
801 - 1000	1	0,07%	5	0,29%	19	2,48%	24	2,40%	20	0,88%	29	1,07%
1001 -	2	0,13%			20	2,61%	33	3,30%	22	0,96%	33	1,22%
EURO II	101	6,65%	138	8,09%	162	21,18%	214	21,38%	263	11,52%	352	13,00%
ispod 51	1	0,07%			1	0,10%			1	0,04%	1	0,04%
51 - 125	169	11,13%	197	11,55%	29	3,79%	25	2,50%	198	8,67%	222	8,20%
126 - 250	276	18,18%	253	14,83%	30	3,92%	45	4,50%	306	13,40%	298	11,01%
251 - 400	297	19,57%	390	22,86%	34	4,44%	72	7,19%	331	14,50%	462	17,07%
401 - 600	141	9,29%	129	7,56%	44	5,75%	75	7,49%	185	8,10%	204	7,54%
601 - 800	247	16,27%	215	12,60%	85	11,11%	147	14,69%	332	14,54%	362	13,37%
801 - 1000	72	4,74%	129	7,56%	57	7,45%	54	5,39%	129	5,65%	183	6,76%
1001 -	212	13,97%	255	14,95%	85	11,11%	114	11,39%	297	13,01%	369	13,63%
EURO III	1.415	93,21%	1.568	91,91%	364	47,58%	533	53,25%	1.779	77,92%	2.101	77,61%
UKUPNO	1.518	100,00%	1.706	100,00%	765	100,00%	1.001	100,00%	2.283	100,00%	2.707	100,00%

Izvor podataka: IS CURH (na dan 22.2.2016.)

BROJ VOZILA 2014 - razina emisije ispušnih plinova



BROJ VOZILA 2015 - razina emisije ispušnih plinova



BROJ MOTORNIH VOZILA PREMA MARKI VOZILA

2014			2015		
MARKA VOZILA	BROJ VOZILA	Broj vozila - udio (%)	MARKA VOZILA	BROJ VOZILA	Broj vozila - udio (%)
	NOVA			RABLJENA	
VOLKSWAGEN	5.649	15,82%	VOLKSWAGEN	8.209	21,05%
OPEL	3.978	11,14%	RENAULT	4.342	11,14%
ŠKODA	3.277	9,18%	MERCEDES-BENZ	4.124	10,58%
PEUGEOT	2.294	6,43%	BMW	2.793	7,16%
RENAULT	2.253	6,31%	OPEL	2.746	7,04%
CITROEN	1.932	5,41%	AUDI	2.736	7,02%
FORD	1.819	5,10%	FORD	2.419	6,20%
HYUNDAI	1.603	4,49%	PEUGEOT	2.159	5,54%
TOYOTA	1.529	4,28%	FIAT	1.978	5,07%
KIA	1.229	3,44%	SMART	1.016	2,61%
AUDI	1.129	3,16%	CITROEN	992	2,54%
DACIA	1.088	3,05%	ALFA ROMEO	828	2,12%
MAZDA	1.037	2,90%	MAZDA	439	1,13%
NISSAN	965	2,70%	ŠKODA	433	1,11%
BMW	862	2,41%	TOYOTA	406	1,04%
MERCEDES-BENZ	679	1,90%	SEAT	400	1,03%
SEAT	617	1,73%	HONDA	301	0,77%
FIAT	570	1,60%	VOLVO	287	0,74%
SUZUKI	527	1,48%	NISSAN	263	0,67%
HONDA	244	0,68%	HYUNDAI	214	0,55%
MITSUBISHI	199	0,56%	MINI	162	0,42%
CHEVROLET	170	0,48%	KIA	129	0,33%
VOLVO	160	0,45%	LANCIA	123	0,32%
MINI	97	0,27%	MITSUBISHI	110	0,28%
ALFA ROMEO	53	0,15%	SUZUKI	110	0,28%
SUBARU	48	0,13%	CHEVROLET	58	0,15%
SMART	41	0,11%	CHRYSLER	54	0,14%
JEEP	35	0,10%	JAGUAR	47	0,12%
LAND ROVER	32	0,09%	LAND ROVER	43	0,11%
PORSCHE	22	0,06%	PORSCHE	31	0,08%
LANCIA	19	0,05%	DACIA	30	0,08%
LADA	12	0,03%	SAAB	30	0,08%
INFINITI	3	0,01%	JEEP	27	0,07%
JAGUAR	3	0,01%	DAEWOO	26	0,07%
ADRIA	2	0,01%	SUBARU	20	0,05%
ISUZU	1	0,00%	DAIHATSU	19	0,05%
LAMBORGHINI	1	0,00%	ROVER	19	0,05%
LEXUS	1	0,00%	LEXUS	16	0,04%
MASERATI	1	0,00%	DODGE	12	0,03%
TATA	1	0,00%	MG	9	0,02%
ASTON MARTIN	0		PONTIAC	7	0,02%

2015			2015		
MARKA VOZILA	BROJ VOZILA	Broj vozila - udio (%)	MARKA VOZILA	BROJ VOZILA	Broj vozila - udio (%)
	NOVA			RABLJENA	
VOLKSWAGEN	5.783	15,26%	VOLKSWAGEN	9.197	20,39%
OPEL	3.821	10,09%	RENAULT	4.970	11,02%
ŠKODA	3.083	8,14%	MERCEDES-BENZ	4.495	9,97%
RENAULT	2.892	7,63%	BMW	3.439	7,63%
FORD	2.226	5,88%	OPEL	3.226	7,15%
PEUGEOT	1.997	5,27%	AUDI	3.097	6,87%
DACIA	1.857	4,90%	FORD	2.825	6,26%
KIA	1.715	4,53%	PEUGEOT	2.558	5,67%
CITROEN	1.555	4,10%	FIAT	2.057	4,56%
AUDI	1.333	3,52%	CITROEN	1.356	3,01%
SUZUKI	1.264	3,34%	SMART	975	2,16%
TOYOTA	1.261	3,33%	ALFA ROMEO	959	2,13%
MAZDA	1.032	2,72%	MAZDA	604	1,34%
BMW	996	2,63%	ŠKODA	552	1,22%
HYUNDAI	959	2,53%	SEAT	540	1,20%
SEAT	906	2,39%	TOYOTA	536	1,19%
MERCEDES-BENZ	859	2,27%	VOLVO	365	0,81%
NISSAN	793	2,09%	HONDA	364	0,81%
FIAT	566	1,49%	HYUNDAI	328	0,73%
MITSUBISHI	289	0,76%	NISSAN	321	0,71%
HONDA	194	0,51%	MINI	203	0,45%
VOLVO	186	0,49%	KIA	159	0,35%
MINI	144	0,38%	SUZUKI	155	0,34%
SMART	113	0,30%	LANCIA	146	0,32%
LAND ROVER	80	0,21%	MITSUBISHI	128	0,28%
SUBARU	76	0,20%	CHEVROLET	63	0,14%
JEEP	70	0,18%	LAND ROVER	58	0,13%
PORSCHE	39	0,10%	CHRYSLER	57	0,13%
ALFA ROMEO	35	0,09%	DACIA	50	0,11%
INFINITI	18	0,05%	JEEP	46	0,10%
TATA	7	0,02%	SAAB	41	0,09%
JAGUAR	6	0,02%	PORSCHE	32	0,07%
LEXUS	4	0,01%	JAGUAR	31	0,07%
OLDSMOBILE	3	0,01%	DAEWOO	27	0,06%
ADRIA	2	0,01%	SUBARU	20	0,04%
CHEVROLET	2	0,01%	DAIHATSU	17	0,04%
MAHINDRA	2	0,01%	LEXUS	15	0,03%
CADILLAC	1	0,00%	ROVER	14	0,03%
DODGE	1	0,00%	DODGE	8	0,02%
LANCIA	1	0,00%	SSANGYONG	5	0,01%
PUCH	1	0,00%	CADILLAC	4	0,01%

BROJ MOTORNIH VOZILA PREMA MARKI VOZILA

2014					
MARKA VOZILA	BROJ VOZILA	Broj vozila - udio (%)	MARKA VOZILA	BROJ VOZILA	Broj vozila - udio (%)
	NOVA			RABLJENA	
AUSTIN ROVER	0		INFINITI	6	0,02%
BENTLEY	0		CADILLAC	5	0,01%
BUICK	0		ADRIA	4	0,01%
CADILLAC	0		SSANGYONG	4	0,01%
CHRYSLER	0		LINCOLN	3	0,01%
CORVETTE	0		MASERATI	3	0,01%
DAEWOO	0		FERRARI	2	0,01%
DAIHATSU	0		MERCURY	2	0,01%
DODGE	0		ASTON MARTIN	1	0,00%
FERRARI	0		BENTLEY	1	0,00%
HUMMER	0		BUICK	1	0,00%
IVECO	0		CORVETTE	1	0,00%
LINCOLN	0		HUMMER	1	0,00%
MAHINDRA	0		IVECO	1	0,00%
MERCURY	0		MAHINDRA	1	0,00%
MG	0		OLDSMOBILE	1	0,00%
MORGAN	0		PUCH	1	0,00%
MORRIS	0		SINCA	1	0,00%
OLDSMOBILE	0		TATA	1	0,00%
PLYMOUTH	0		ZASTAVA	1	0,00%
PONTIAC	0		AUSTIN ROVER	0	
PUCH	0		ISUZU	0	
ROLLS-ROYCE	0		LADA	0	
ROVER	0		LAMBORGHINI	0	
SAAB	0		MORGAN	0	
SHUANGHUAN	0		MORRIS	0	
SINCA	0		PLYMOUTH	0	
SSANGYONG	0		ROLLS-ROYCE	0	
TAVRIA	0		SHUANGHUAN	0	
ZASTAVA	0		TAVRIA	0	
Nespecificirano (A)	1	0,00%	Nespecificirano (A)	18	0,05%
YAMAHA	577	1,62%	SUZUKI	139	0,36%
PIAGGIO	162	0,45%	HONDA	115	0,29%
HONDA	154	0,43%	YAMAHA	102	0,26%
KYMCO	102	0,29%	BMW	93	0,24%
BMW	92	0,26%	PIAGGIO	75	0,19%
HARLEY DAVIDSON	60	0,17%	KAWASAKI	62	0,16%
KTM	54	0,15%	HARLEY DAVIDSON	25	0,06%
KAWASAKI	39	0,11%	DUCATI	23	0,06%
SUZUKI	37	0,10%	APRILIA	21	0,05%
APRILIA	32	0,09%	KTM	10	0,03%

2015					
MARKA VOZILA	BROJ VOZILA	Broj vozila - udio (%)	MARKA VOZILA	BROJ VOZILA	Broj vozila - udio (%)
	NOVA			RABLJENA	
SAAB	1	0,00%	MASERATI	4	0,01%
TAVRIA	1	0,00%	MG	4	0,01%
MORGAN	1	0,00%	ADRIA	3	0,01%
ASTON MARTIN	0		BUICK	3	0,01%
AUSTIN ROVER	0		FERRARI	3	0,01%
BENTLEY	0		IVECO	3	0,01%
BUICK	0		ASTON MARTIN	2	0,00%
CHRYSLER	0		AUSTIN ROVER	2	0,00%
CORVETTE	0		INFINITI	2	0,00%
DAEWOO	0		LADA	2	0,00%
DAIHATSU	0		PLYMOUTH	2	0,00%
FERRARI	0		PONTIAC	2	0,00%
HUMMER	0		ZASTAVA	2	0,00%
ISUZU	0		CORVETTE	1	0,00%
IVECO	0		HUMMER	1	0,00%
LADA	0		LINCOLN	1	0,00%
LAMBORGHINI	0		MORRIS	1	0,00%
LINCOLN	0		ROLLS-ROYCE	1	0,00%
MASERATI	0		SHUANGHUAN	1	0,00%
MERCURY	0		TATA	1	0,00%
MG	0		TAVRIA	1	0,00%
MORRIS	0		BENTLEY	0	
PLYMOUTH	0		ISUZU	0	
PONTIAC	0		LAMBORGHINI	0	
ROLLS-ROYCE	0		MAHINDRA	0	
ROVER	0		MERCURY	0	
SHUANGHUAN	0		OLDSMOBILE	0	
SINCA	0		PUCH	0	
SSANGYONG	0		SINCA	0	
ZASTAVA	0		MORGAN	0	
Nespecificirano (A)	4	0,01%	Nespecificirano (A)	11	0,02%
YAMAHA	607	1,60%	HONDA	183	0,41%
PIAGGIO	258	0,68%	YAMAHA	160	0,35%
HONDA	142	0,37%	SUZUKI	158	0,35%
KYMCO	124	0,33%	BMW	117	0,26%
BMW	100	0,26%	KAWASAKI	74	0,16%
KAWASAKI	82	0,22%	PIAGGIO	71	0,16%
APRILIA	50	0,13%	HARLEY DAVIDSON	38	0,08%
SUZUKI	48	0,13%	APRILIA	36	0,08%
HARLEY DAVIDSON	43	0,11%	DUCATI	32	0,07%
LINHAI	43	0,11%	KYMCO	24	0,05%

BROJ MOTORNIH VOZILA PREMA MARKI VOZILA

2014						2015					
MARKA VOZILA	BROJ VOZILA	Broj vozila - udio (%)	MARKA VOZILA	BROJ VOZILA	Broj vozila - udio (%)	MARKA VOZILA	BROJ VOZILA	Broj vozila - udio (%)	MARKA VOZILA	BROJ VOZILA	Broj vozila - udio (%)
	NOVA			RABLIENA			NOVA			RABLIENA	
CFMOTO	27	0,08%	KYMCO	10	0,03%	KTM	38	0,10%	GILERA	9	0,02%
DUCATI	24	0,07%	GILERA	7	0,02%	DUCATI	35	0,09%	KTM	7	0,02%
EGLMOTOR	14	0,04%	MOTO GUZZI	5	0,01%	ADLY	19	0,05%	MOTO GUZZI	5	0,01%
SYM	12	0,03%	SYM	4	0,01%	CFMOTO	16	0,04%	DAELIM	4	0,01%
DERBI	8	0,02%	KEEWAY	3	0,01%	SYM	13	0,03%	ACCESS MOTOR	3	0,01%
FUXIN	4	0,01%	AIXAM-MEGA	2	0,01%	SHINERAY	9	0,02%	KEEWAY	3	0,01%
GILERA	4	0,01%	CFMOTO	2	0,01%	HUSQVARNA	7	0,02%	LINHAI	3	0,01%
GOES	4	0,01%	DERBI	2	0,01%	ACCESS MOTOR	5	0,01%	MV AGUSTA	3	0,01%
KEEWAY	4	0,01%	HUSABERG	1	0,00%	EGLMOTOR	4	0,01%	SYM	3	0,01%
LINHAI	3	0,01%	MV AGUSTA	1	0,00%	GILERA	4	0,01%	GOES	2	0,00%
PUCH	3	0,01%	VESPA	1	0,00%	GOES	4	0,01%	HUSABERG	2	0,00%
ADLY	2	0,01%	ACCESS MOTOR	0		SHERCO	4	0,01%	HUSQVARNA	2	0,00%
HUSABERG	2	0,01%	ADLY	0		DERBI	3	0,01%	JINGLING	2	0,00%
HUSQVARNA	2	0,01%	AEON	0		VESPA	3	0,01%	MALAGUTI	2	0,00%
SHINERAY	2	0,01%	BAROSSA	0		JINGLING	2	0,01%	SHINERAY	2	0,00%
AIXAM-MEGA	1	0,00%	BIMOTA	0		MV AGUSTA	2	0,01%	AIXAM-MEGA	1	0,00%
MOTO GUZZI	1	0,00%	CAN-AM	0		AIXAM-MEGA	1	0,00%	BAROSSA	1	0,00%
MV AGUSTA	1	0,00%	CC	0		BIMOTA	1	0,00%	CFMOTO	1	0,00%
SHERCO	1	0,00%	DAELIM	0		CAN-AM	1	0,00%	DERBI	1	0,00%
VESPA	1	0,00%	EGLMOTOR	0		CC	1	0,00%	EGLMOTOR	1	0,00%
ACCESS MOTOR	0		FUXIN	0		KEEWAY	1	0,00%	LONGJIA	1	0,00%
AEON	0		GOES	0		MOTO GUZZI	1	0,00%	MORGAN	1	0,00%
BAROSSA	0		HUSQVARNA	0		POLARIS	1	0,00%	VESPA	1	0,00%
BIMOTA	0		JINGLING	0		AEON	0		ADLY	0	
CAN-AM	0		LINHAI	0		BAROSSA	0		AEON	0	
CC	0		LONGJIA	0		DAELIM	0		BIMOTA	0	
DAELIM	0		MALAGUTI	0		FUXIN	0		CAN-AM	0	
JINGLING	0		MORGAN	0		HUSABERG	0		CC	0	
LONGJIA	0		POLARIS	0		LONGJIA	0		FUXIN	0	
MALAGUTI	0		PUCH	0		MALAGUTI	0		POLARIS	0	
MORGAN	0		SHERCO	0		MORGAN	0		PUCH	0	
POLARIS	0		SHINERAY	0		PUCH	0		SHERCO	0	
Nespecificirano (M)	89	0,25%	Nespecificirano (M)	62	0,16%	Nespecificirano (M)	34	0,09%	Nespecificirano (M)	48	0,11%
UKUPNO	35.701	100,00%	UKUPNO	38.991	100,00%	UKUPNO	37.885	100,00%	UKUPNO	45.097	100,00%

BROJ MOTORNIH VOZILA PREMA GODINI PROIZVODNJE

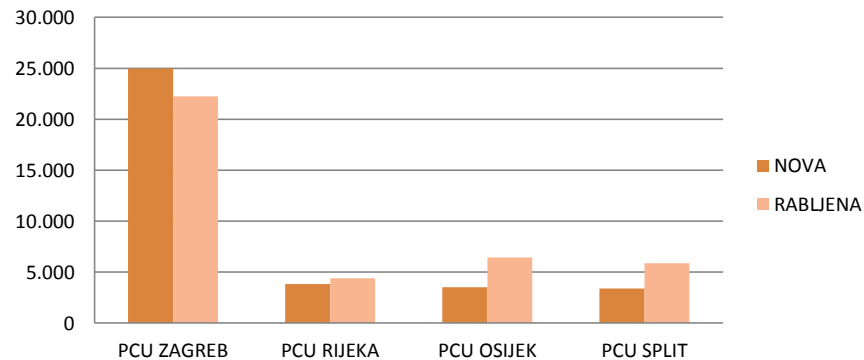
NOVA VOZILA			RABLIJENA VOZILA						
GODINA PROIZVODNJE	BROJ VOZILA	Broj vozila - udio (%)	BROJ VOZILA	Broj vozila - udio (%)	GODINA PROIZVODNJE	BROJ VOZILA	Broj vozila - udio (%)	BROJ VOZILA	Broj vozila - udio (%)
	2014					2015			
1924					1924			1	0,00%
1930					1930			1	0,00%
1931					1931			1	0,00%
1939					1939			1	0,00%
1942					1942			1	0,00%
1947					1947			1	0,00%
1948					1948	4	0,01%		
1950					1950			2	0,00%
1953					1953	1	0,00%	2	0,00%
1955					1955				
1956					1956	2	0,01%		
1957					1957			2	0,00%
1958					1958	5	0,01%	1	0,00%
1959					1959	1	0,00%		
1960					1960	1	0,00%	2	0,00%
1961					1961			1	0,00%
1962					1962			1	0,00%
1963					1963				
1964					1964			2	0,00%
1965					1965	1	0,00%		
1966					1966	3	0,01%	1	0,00%
1967					1967	1	0,00%	6	0,01%
1968					1968	2	0,01%	2	0,00%
1969					1969	2	0,01%	2	0,00%
1970					1970	3	0,01%	2	0,00%
1971					1971	1	0,00%	3	0,01%
1972					1972	4	0,01%	5	0,01%
1973					1973	5	0,01%	6	0,01%
1974					1974	3	0,01%	1	0,00%
1975					1975	1	0,00%	3	0,01%
1976					1976			5	0,01%
1977					1977	4	0,01%	4	0,01%
1978					1978			5	0,01%
1979					1979	7	0,02%	4	0,01%
1980					1980	3	0,01%	3	0,01%
1981					1981	7	0,02%	6	0,01%
1982					1982	6	0,02%	6	0,01%
1983					1983	10	0,03%	3	0,01%
1984					1984	10	0,03%	8	0,02%
1985					1985	7	0,02%	9	0,02%
1986					1986	8	0,02%	5	0,01%
1987					1987	14	0,04%	13	0,03%
1988					1988	19	0,05%	16	0,04%
1989					1989	22	0,06%	15	0,03%
1990					1990	22	0,06%	20	0,04%
1991					1991	47	0,12%	31	0,07%
1992					1992	38	0,10%	29	0,06%
1993					1993	42	0,11%	39	0,09%
1994					1994	58	0,15%	61	0,14%
1995					1995	81	0,21%	69	0,15%
1996					1996	110	0,28%	86	0,19%
1997					1997	143	0,37%	133	0,29%
1998					1998	212	0,54%	241	0,53%
1999					1999	442	1,13%	459	1,02%
2000					2000	1.271	3,26%	1.197	2,65%
2001					2001	2.953	7,57%	2.082	4,62%
2002					2002	3.417	8,76%	2.955	6,55%
2003					2003	4.077	10,46%	3.601	7,99%
2004					2004	4.263	10,93%	4.576	10,15%
2005					2005	3.862	9,90%	4.243	9,41%
2006			1	0,00%	2006	3.021	7,75%	3.672	8,14%
2007					2007	2.567	6,58%	3.172	7,03%
2008					2008	2.118	5,43%	2.638	5,85%
2009					2009	2.135	5,48%	2.141	4,75%
2010					2010	3.220	8,26%	3.113	6,90%
2011	1	0,00%	2	0,01%	2011	2.675	6,86%	4.575	10,14%
2012	1	0,00%			2012	1.124	2,88%	3.242	7,19%
2013	37	0,10%	2	0,01%	2013	780	2,00%	1.268	2,81%
2014	35.662	99,89%	42	0,11%	2014	156	0,40%	1.047	2,32%
2015			37.838	99,88%	2015			255	0,57%
UKUPNO	35.701	100,00%	37.885	100,00%	UKUPNO	38.991	100,00%	45.097	100,00%

BROJ MOTORNIH VOZILA PO CARINSKIM UREDIMA

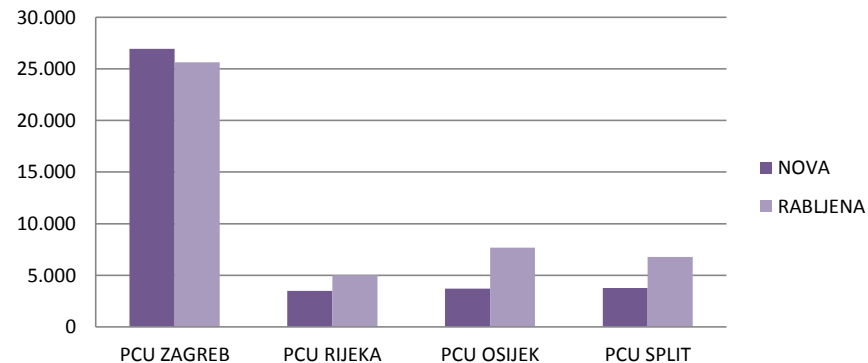
STAROST VOZILA:	2014						2015					
	NOVA VOZILA		RABLJENA VOZILA		VOZILA - UKUPNO		NOVA VOZILA		RABLJENA VOZILA		VOZILA - UKUPNO	
	Broj vozila	Broj vozila - udio (%)	Broj vozila	Broj vozila - udio (%)	Broj vozila	Broj vozila - udio (%)	Broj vozila	Broj vozila - udio (%)	Broj vozila	Broj vozila - udio (%)	Broj vozila	Broj vozila - udio (%)
CARINSKI URED ZAGREB I	9.140	25,60%	5.452	13,98%	14.592	19,54%	11.182	29,52%	6.380	14,15%	17.562	21,16%
CARINSKI URED ZAGREB II	12.933	36,23%	7.525	19,30%	20.458	27,39%	12.275	32,40%	8.885	19,70%	21.160	25,50%
CARINSKI URED KRAPINA	368	1,03%	1.188	3,05%	1.556	2,08%	739	1,95%	1.367	3,03%	2.106	2,54%
CARINSKI URED VARAŽDIN	1.241	3,48%	2.954	7,58%	4.195	5,62%	1.380	3,64%	3.206	7,11%	4.586	5,53%
CARINSKI URED KOPRIVNICA	597	1,67%	2.396	6,15%	2.993	4,01%	507	1,34%	2.532	5,61%	3.039	3,66%
CARINSKI URED SISAK	321	0,90%	1.778	4,56%	2.099	2,81%	509	1,34%	2.212	4,90%	2.721	3,28%
CARINSKI URED KARLOVAC	383	1,07%	950	2,44%	1.333	1,78%	343	0,91%	1.043	2,31%	1.386	1,67%
PODRUČNI CARINSKI URED ZAGREB	24.983	69,98%	22.243	57,05%	47.226	63,23%	26.935	71,10%	25.625	56,82%	52.560	63,34%
CARINSKI URED RIJEKA	2.436	6,82%	2.100	5,39%	4.536	6,07%	2.315	6,11%	2.439	5,41%	4.754	5,73%
CARINSKI URED PULA - POLA	1.381	3,87%	2.087	5,35%	3.468	4,64%	1.162	3,07%	2.320	5,14%	3.482	4,20%
CARINSKI URED GOSPIĆ	4	0,01%	226	0,58%	230	0,31%			264	0,59%	264	0,32%
PODRUČNI CARINSKI URED RIJEKA	3.821	10,70%	4.413	11,32%	8.234	11,02%	3.477	9,18%	5.023	11,14%	8.500	10,24%
CARINSKI URED OSIJEK	3.017	8,45%	3.744	9,60%	6.761	9,05%	3.245	8,57%	4.753	10,54%	7.998	9,64%
CARINSKI URED SLAVONSKI BROAD	419	1,17%	2.159	5,54%	2.578	3,45%	421	1,11%	2.296	5,09%	2.717	3,27%
CARINSKI URED VIROVITICA	77	0,22%	543	1,39%	620	0,83%	50	0,13%	620	1,37%	670	0,81%
PODRUČNI CARINSKI URED OSIJEK	3.513	9,84%	6.446	16,53%	9.959	13,33%	3.716	9,81%	7.669	17,01%	11.385	13,72%
CARINSKI URED SPLIT	2.007	5,62%	3.614	9,27%	5.621	7,53%	2.174	5,74%	4.167	9,24%	6.341	7,64%
CARINSKI URED ŠIBENIK	382	1,07%	640	1,64%	1.022	1,37%	441	1,16%	728	1,61%	1.169	1,41%
CARINSKI URED ZADAR	584	1,64%	986	2,53%	1.570	2,10%	715	1,89%	1.045	2,32%	1.760	2,12%
CARINSKI URED PLOČE	39	0,11%	375	0,96%	414	0,55%	42	0,11%	539	1,20%	581	0,70%
CARINSKI URED DUBROVNIK	372	1,04%	274	0,70%	646	0,86%	385	1,02%	301	0,67%	686	0,83%
PODRUČNI CARINSKI URED SPLIT	3.384	9,48%	5.889	15,10%	9.273	12,41%	3.757	9,92%	6.780	15,03%	10.537	12,70%
CARINSKA UPRAVA RH	35.701	100,00%	38.991	100,00%	74.692	100,00%	37.885	100,00%	45.097	100,00%	82.982	100,00%

Izvor podataka: IS CURH (na dan 22.2.2016.)

Broj vozila - 2014



Broj vozila - 2015



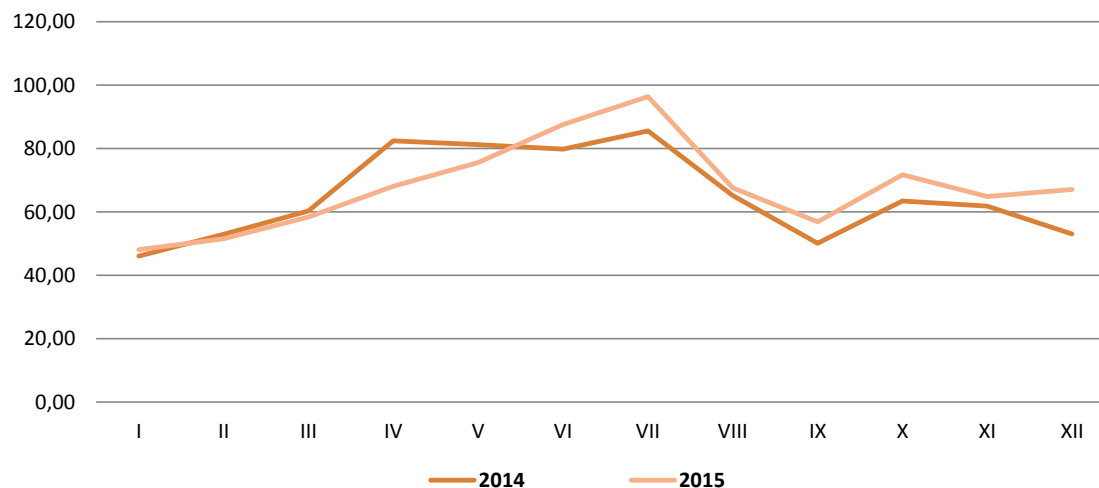
OSTVARENI PRIHODI OD POSEBNOG POREZA NA MOTORNA VOZILA

MJESEC	2014			2015			RAZLIKA: 2015.g. / 2014.g.	
	- OSOBNI AUTOMOBILI, OSTALA MOTORNA VOZILA, PLOVILA I ZRAKOPLOVI *	- MOTORNA VOZILA ** - od 01.07.2013.	UKUPNO - kn	- OSOBNI AUTOMOBILI, OSTALA MOTORNA VOZILA, PLOVILA I ZRAKOPLOVI *	- MOTORNA VOZILA ** - od 01.07.2013.	UKUPNO - kn		
SIJEČANJ	245.241	45.746.190	45.991.431	432.783	47.657.666	48.090.449	4,56%	2.099.017
VELJAČA	51.356	52.907.219	52.958.575	5.267	51.533.928	51.539.195	-2,68%	-1.419.380
OŽUJAK	187.983	60.095.445	60.283.427	51.888	58.305.675	58.357.563	-3,19%	-1.925.864
TRAVANJ	268.114	82.106.383	82.374.497	27.376	68.082.307	68.109.683	-17,32%	-14.264.814
SVIBANJ	55.623	81.127.683	81.183.306	97.523	75.462.806	75.560.329	-6,93%	-5.622.977
LIPANJ	80.164	79.712.241	79.792.405	19.129	87.595.296	87.614.424	9,80%	7.822.019
SRPANJ	5.166.639	80.354.080	85.520.719	97.377	96.285.359	96.382.736	12,70%	10.862.017
KOLOVOZ	-5.066.797	70.220.007	65.153.210	68.336	67.484.742	67.553.078	3,68%	2.399.868
RUJAN	15.872	50.071.201	50.087.073	192.728	56.650.897	56.843.625	13,49%	6.756.552
LISTOPAD	229.103	63.174.142	63.403.246	39.340	71.659.123	71.698.463	13,08%	8.295.218
STUDENI	84.207	61.750.373	61.834.580	35.427	64.799.960	64.835.387	4,85%	3.000.807
PROSINAC	25.644	52.983.723	53.009.367	220.116	66.847.206	67.067.322	26,52%	14.057.955
UKUPNO	1.343.149	780.248.688	781.591.836	1.287.291	812.364.965	813.652.255	4,10%	32.060.419

* prihodi vezani uz Zakon o posebnim porezima na osobne automobile, ostala motorna vozila, plovila i zrakoplove

** prihodi vezani uz Zakon o posebnom porezu na motorna vozila

PRIHODI - mil Kn



POVRAT POSEBNOG POREZA NA MOTORNA VOZILA

MJESEC	BROJ VOZILA	Iznos povrata (kn)	BROJ VOZILA	Iznos povrata (kn)
	2014		2015	
SIJEČANJ	1	6.269	275	1.972.033
VELJAČA	34	405.776	478	3.237.832
OŽUJAK			225	2.676.854
TRAVANJ	48	243.292	86	1.056.277
SVIBANJ	15	77.464	67	806.071
LIPANJ			47	667.435
SRPANJ	65	494.620	125	1.782.333
KOLOVOZ	34	486.834	17	283.075
RUJAN	87	777.711	159	2.161.152
LISTOPAD	250	2.045.983	335	4.167.741
STUDENI	442	2.664.816	417	3.666.550
PROSINAC	653	4.868.918	458	4.436.298
UKUPNO	1.629	12.071.683	2.689	26.913.649

- PO CARINSKIM UREDIMA

CARINSKI URED	BROJ VOZILA	Iznos povrata (kn)	BROJ VOZILA	Iznos povrata (kn)
	2014		2015	
CARINSKI URED ZAGREB I	773	5.186.402	1.375	11.847.772
CARINSKI URED ZAGREB II	234	1.694.515	470	4.930.390
CARINSKI URED KRAPINA			144	673.220
CARINSKI URED VARAŽDIN			3	23.850
CARINSKI URED KOPRIVNICA			2	10.744
CARINSKI URED SISAK	1	9.362		
CARINSKI URED KARLOVAC				
PODRUČNI CARINSKI URED ZAGREB	1.008	6.890.280	1.994	17.485.976
CARINSKI URED RIJEKA	41	258.440	47	305.612
CARINSKI URED PULA - POLA	326	2.862.420	415	6.524.505
CARINSKI URED GOSPIĆ				
PODRUČNI CARINSKI URED RIJEKA	367	3.120.860	462	6.830.117
CARINSKI URED OSIJEK	176	1.354.469	105	924.788
CARINSKI URED SLAVONSKI BROD			1	1.585
CARINSKI URED VIROVITICA				
PODRUČNI CARINSKI URED OSIJEK	176	1.354.469	106	926.372
CARINSKI URED SPLIT	60	457.457	123	1.600.789
CARINSKI URED ŠIBENIK				
CARINSKI URED ZADAR	18	248.616	4	70.396
CARINSKI URED PLOČE				
CARINSKI URED DUBROVNIK				
PODRUČNI CARINSKI URED SPLIT	78	706.074	127	1.671.185
CARINSKA UPRAVA RH	1.629	12.071.683	2.689	26.913.649